

## Class of 2009 ACT Test Scores

Class of 2009	WISC.	NEWLHS
English	21.7	23.4
Math	22.2	23.7
Reading	22.6	23.4
Science	22.3	22.5
Composite	22.3	23.7

84% of the Class of 2009 took the ACT test.

Additionally, WI out-performs the National ACT scores on a yearly basis. WI is ranked as one of the top three states in the nation each year.



## Recent NEWLHS Student ACT Composite Scores

Class of	Class of	Class of	Class of	Class of
22.7	22.3	22.7	24.0	23.7
22.2 (WI Avg.)	22.2 (WI Avg.)	22.3 (WI Avg.)	22.3 (WI Avg.)	22.3 (WI Avg.)

Over 95% of our students enter  
post-secondary schools!

NEW Lutheran is supported by the following

### Association Churches

Christ of the Bay Lutheran, Green Bay

Faith Lutheran, Appleton

Faith Lutheran, Green Bay

Hope Lutheran, De Pere

Our Saviour Lutheran, Green Bay

Pilgrim Lutheran, Green Bay

Redeemer Lutheran, Green Bay

St. John Lutheran, Luxemburg

St. John Lutheran, Pulaski

St. Paul Lutheran, Montpelier

Zion Lutheran, Oconto

Zion Lutheran, Oneida

Zion Lutheran, Wayside



**NEW Lutheran High School is affiliated with**  
Celebration Lutheran School & Preschool (Appleton)

Faith Christian Preschool (Green Bay)

Angels of Hope Christian Preschool (DePere)

Our Saviour Lutheran Preschool (Green Bay)

Pilgrim Lutheran School & Preschool (Green Bay)

Redeemer Lutheran School & Preschool (Green Bay)

St. Paul Lutheran School & Preschool (Luxemburg)

Trinity Lutheran School (Green Bay)

Zion Lutheran School & Preschool (Wayside)

## N.E.W. Lutheran High School

1311 S. Robinson Avenue  
Green Bay, WI 54311

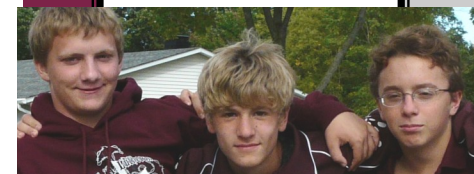
Phone: 920-469-6810

Fax: 920-469-2200

website: [www.newlhs.com](http://www.newlhs.com)

## N.E.W. LUTHERAN HIGH SCHOOL

### 2009-2010 School Profile



*"Helping families raise  
Christian leaders"*

**1311 S. Robinson Ave.  
Green Bay, WI 54311**

**Phone:  
920.469.6810**

**Fax: 920.469.2200**

**Website:  
[www.newlhs.com](http://www.newlhs.com)**

# Northeastern Wisconsin Lutheran High School (NEWLHS)

## **Executive Director**

Chris Nelson

## **Admissions/Dean of Students**

Paul Steinhaus

## **Career Guidance Director**

Kris Schumacher

## **Athletic Director**

Michael Stock

Grades: 9–12

Enrollment: 124

Staffing: 11 Full-time teachers  
1 Part-time teacher

## **Tuition Rates (2009-2010):**

- Association Members: \$4,300
- Community Members: \$5,700

*Real cost to educate a student at  
NEWLHS: \$8,000*

## **ACADEMICS**

Over 52 courses are offered to fulfill NEWLHS's graduation requirements of 22 credits (plus one credit of Religion for each year of attendance.) These credits must include: English (4), Social Studies (3), Science (2), Mathematics (3), Physical Education/Health (2). Elective credits complete the remaining balance.

## **Courses Offered**

### **Religion:**

- Old & New Testament Bible Survey
- Church History
- Senior Religion
- Religions in America
- Christian Doctrine
- Peer Ministry

### **English:**

- English 9, 10, 11 & 12
- UWGB/English 12
- Drama/Speech

### **Mathematics:**

- Pre-Algebra & Algebra
- Geometry
- Algebra II/Trigonometry
- Probability, Statistics & Functions
- Calculus
- Tech Math

### **Science:**

- Physical Science
- Biology
- Advanced Biology
- Chemistry
- Physics

### **Social Studies:**

- World Geography & History
- Consumer Economics I & II
- U.S. History
- Government
- Sociology
- Economics

### **Music:**

- Jubilee Choir
- Capella Choir
- Band
- Independent Music Theory

### **Business/Computers:**

- Keyboarding I
- Drafting I, II, III, IV
- Accounting
- Microsoft Office 2007
- Internet/Web Page I & II

### **Art:**

- Introduction to Art 1 & 2
- Advanced Art
- Independent Art

### **Foreign Language:**

- Spanish I, II, III & IV

### **Tech Ed**

#### **NEWLHS MISSION STATEMENT**

N.E.W. Lutheran High School exists to provide a Christ-centered, Bible-based, quality education and Christian environment to prepare young adults spiritually, mentally, physically, and socially to live as Christian citizens in a modern, complex world.

## **ACCREDITATION**

N.E.W. Lutheran High School was accredited by the **NLSA** (National Lutheran School Accreditation) in 2007 and by the **NCA** (North Central Association) in 2009.

## **ATHLETICS** (B=Boys, G=Girls)

Baseball (B), Basketball (B&G), Cross Country (B&G), Dance (G), Football (B), Soccer (B&G), Softball (G) and Volleyball (G)

## **FACILITIES**

N.E.W. Lutheran High School is located on the East side of Green Bay at 1311 S. Robinson Avenue. The facilities measures over 29,000 square feet and includes classrooms, a gymnasium, commons, computer lab, science lab, music room, locker and weight rooms and a kitchen.

Outside, on 13.7 acres of land is a soccer field and baseball/softball



diamonds. The land abuts a Green Bay conservancy area and with cooperation from the city of Green Bay, this has been designated a 17-acre school forest for outdoor classroom use.

## **HISTORY**

N.E.W. Lutheran High School was incorporated in 1976 and began classes in 1977. The school first rented space at Pilgrim Lutheran Church until 1981. Then it leased rooms at the old Norwood School on 9th Street until 1989 when it shared space at Premontre High School. After one year, it transferred over to the old St. Joseph Academy until 1993 when the current facility was built.

## **STUDENT ACTIVITIES**

Student Council, Yearbook Staff, National Honor Society, Academic teams, Drama Productions, and School Newspaper also enrich our students school lives.